

Shropshire Safeguarding Community Partnership

Sarah Hollinshead-Bland

Statutory Safeguarding Business Partner





Shropshire Safeguarding Community Partnership

- *Our previous structure*
 - Community Safety Partnership
 - Shropshire Safeguarding Children Board
 - Keeping Adults Safe in Shropshire Board

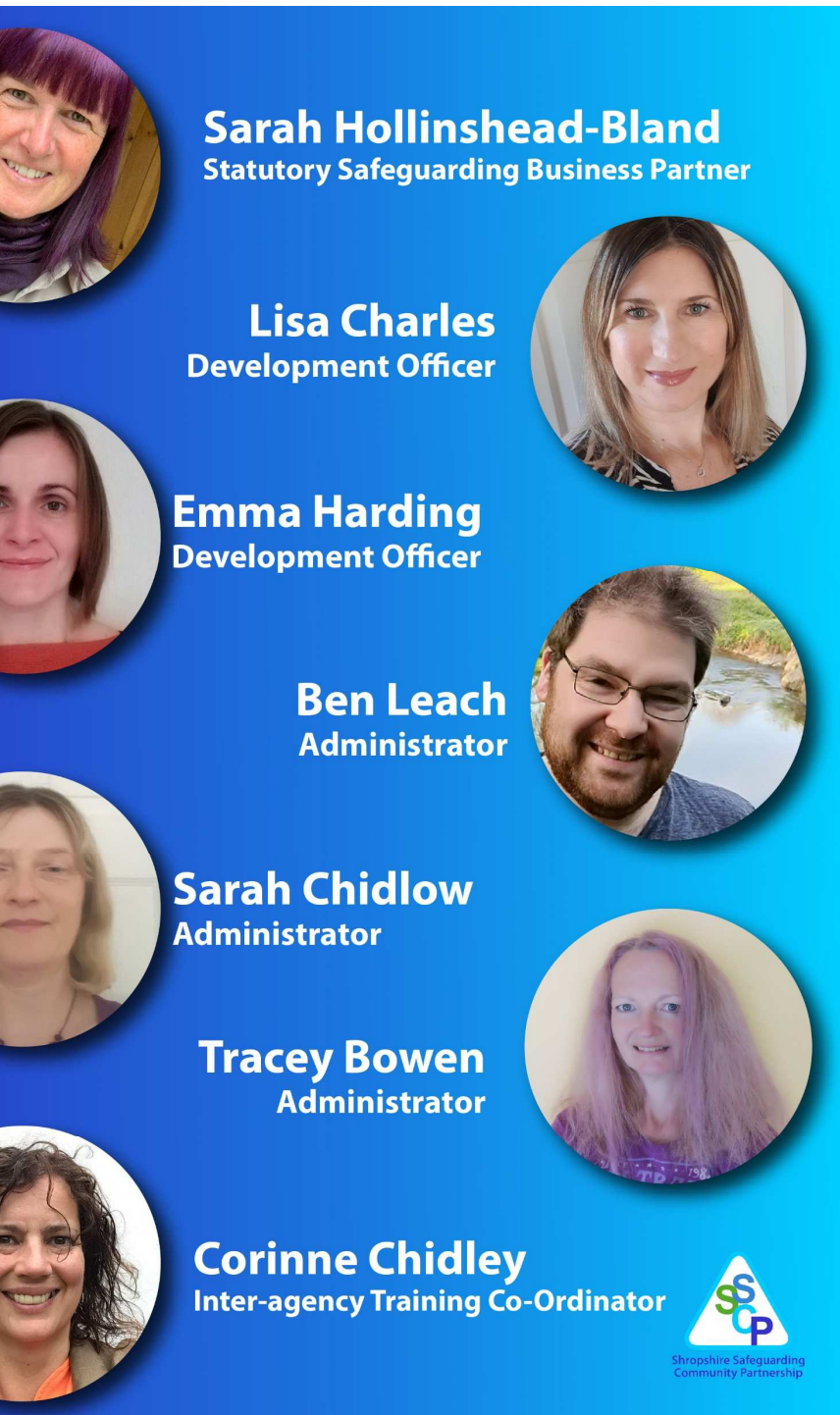
Shropshire Safeguarding Community Partnership

- *Our new structure*



Shropshire Safeguarding Community Partnership

- *How we developed our priorities*
 - Strategy and priority setting day on 13th February 2020
 - National regional and local information including demand data
 - Previous priorities and progress
 - Long-listing and shortlisting process



Sarah Hollinshead-Bland
Statutory Safeguarding Business Partner

Lisa Charles
Development Officer


Emma Harding
Development Officer

Ben Leach
Administrator

Sarah Chidlow
Administrator

Tracey Bowen
Administrator

Corinne Chidley
Inter-agency Training Co-Ordinator



Shropshire Safeguarding
Community Partnership

How the partnership is supported



Some of our achievements so far

shropshire council safeguarding



Volunteers Safeguarding Briefing – COVID 19 Part 1 - 2020

**“If you see something
say something”**



COVID-19 pandemic: Essential multi-agency safeguarding and community safety activity

Essential activity will be reviewed on a regular basis by a core COVID 19 Safeguarding and Risk Management Group. The meetings held to review this activity will support not replace:

- COVID-19 multi-agency emergency planning groups/partnerships
- Existing escalation/resolution procedures
- Individual agencies working together in multi-agency operational groups

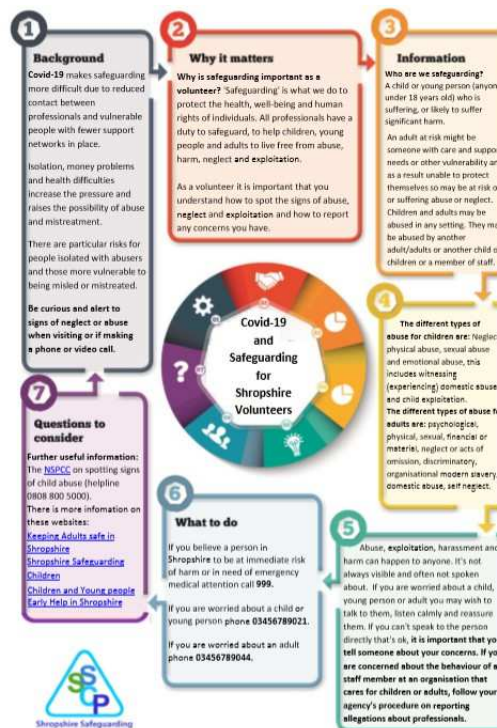
Overview

Community Safety	Homelessness	Adult Safeguarding	Child Safeguarding	Partnership
Domestic Abuse: <ul style="list-style-type: none"> • Multi-agency activity and response • MARAC 	<ul style="list-style-type: none"> • Rough Sleepers • Temporary Accommodation 	Adult Safeguarding: <ul style="list-style-type: none"> • First Point of Contact/Concerns • S42/Other Enquiries • Safeguarding Plans 	Child Protection: <ul style="list-style-type: none"> • Child Protection Plans • Child in Need Plans • Looked After Children 	SSCP Meetings
Multi-Agency Public Protection Arrangements (MAPPA): (Level 2 and 3 cases)	Mental Health Act assessments and detention	Multi-agency management of adults assessed as being at high risk of danger	Vulnerable school children	Link with COVID-19 multi-agency emergency planning
Police/Probation High Risk Management Plans	Financial Scams and Doorstep Crime	Care Homes	Child Death Overview Panel (Clinical Commissioning Group led)	Performance monitoring (demand and timeliness)
Channel Panel	Licensing (Taxis and premises)		Local Authority Designated Officer functions	Statutory Learning Reviews
Implementation of the Coronavirus Act 2020	Houses of Multiple Occupancy			Critical Information/Guidance for Professionals and individuals at risk/their families/communities

Multi-agency training provision

SSCP Performance measures for essential multi-agency safeguarding and community safety activity during the COVID-19 pandemic

	Lead Agency/Person	As at Year End 31/03/20	Data capture April 2020	Comments	Data capture May 2020 (cumulative)	Direction of travel from previous month Red = concern Amber = static Green = +ve
Operational Community Safety						
Domestic Abuse						
Number of domestic violence related incidents	Dave Bettison	2297	193	4% decrease on April 2019. Figures for April 2019 = 200, April 2020 = 193.	411	➡
Number of domestic violence related crimes	Dave Bettison	3412	254	1% decrease on April 2019. Figures for April 2019 = 257, April 2020 = 254	540	➡
Number of domestic violence Contacts to Children's Social Care (referrals from the Police - Workspace)	Jeanette Hill		568		947	⬇
Number of domestic violence Referrals to Children's Social Care (all agencies)	Jeanette Hill		37		79	⬆
Number of Domestic Violence Protection Notices and Orders issued	Dave Bettison	14	1	Same number as April 2019	7	⬆



DOMESTIC ABUSE AND COVID-19 IN SHROPSHIRE

We know that this is a difficult and challenging time for everyone

YOU ARE NOT ALONE

You can access support using the contacts and links below



**IF YOU OR SOMEONE ELSE IS IN IMMEDIATE DANGER
PLEASE CALL 999 AND ASK FOR THE POLICE. 'PRESS 55 IF YOU CAN'T TALK'**

ADULT SOCIAL CARE AND SAFEGUARDING CONCERNS	0345 678 9044
SAFEGUARDING CHILDREN	0345 678 9021
TELFORD AND WREKIN FAMILY CONNECT	01952 385385
OUT OF HOURS EMERGENCY DUTY TEAMS	SHROPSHIRE 0345 678 9040 TELFORD & WREKIN 01952 676500
SHROPSHIRE DOMESTIC ABUSE SERVICE S DAS	MOR-FRI 9AM-5PM 0300 303 1191
WEST MERCIA DOMESTIC ABUSE HELPLINE 24 HOURS	0800 7831 359
RESPECT HELPLINE (for anyone worried that they may be hurting someone else)	0808 802 4040
RALOP (to ask for help/LOBBY - experiencing domestic abuse)	0800 999 5428
FORCED MARRIAGE UNIT	0207 008 015
MENTAL ADVISE LINE	0808 801 0327
SAFELIVES.ORG.UK <small>If you suspect that an abuser is monitoring your internet usage, CLICK HERE to find out how to hide your browser history</small>	





- How do we work more closely?
- What do you want from us and when?
- Your questions

